

UNIVERSITA' DEGLI STUDI DI CATANIA
Dipartimento di
Ingegneria Civile e Architettura

CORSO DI PROGETTO DI STRUTTURE IN ZONA SISMICA

A.A. 2016/17

Modulo A - Prof. Ing. Aurelio Gherisi

PROGETTO DI UN EDIFICIO
IN C.A. IN ZONA SISMICA

- ☐ Tav. 1 Architettonico
- ☐ Tav. 2 Carpenteria
- ☐ Tav. 3 Trave 212
- ☐ Tav. 3 Dettagli trave 212
- ☒ Tav. 4 Pilastro 2
- ☒ Tav. 4 Dettagli pilastro 2
- Scala 1:50
- Scala 1:50
- Scala 1:50
- Scala 1:10
- Scala 1:20
- Scala 1:10

MATERIALI UTILIZZATI

Calcestruzzo: C25/30

Acciaio: B450C

Docente

Prof. Ing. Aurelio Gherisi

Studente

Oriana Rannisi

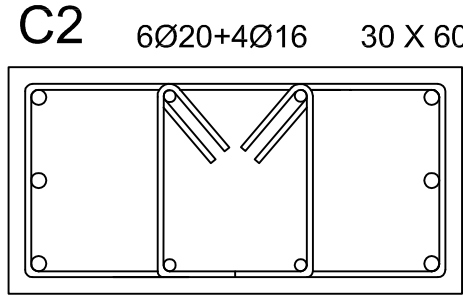
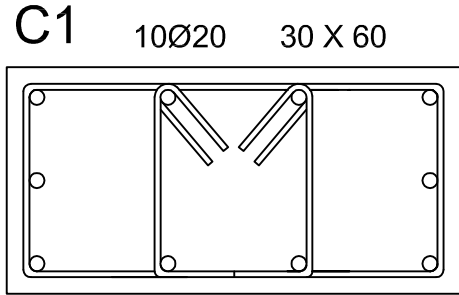
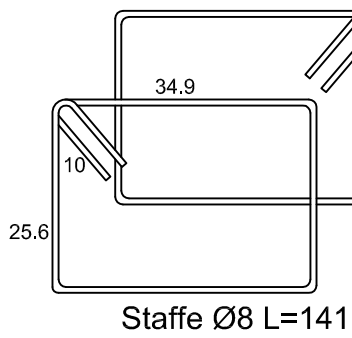
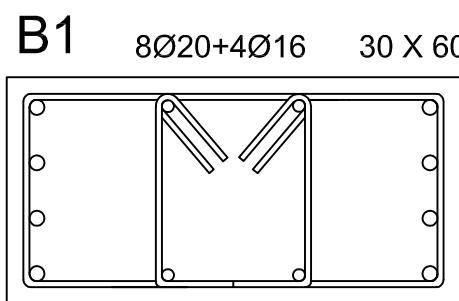
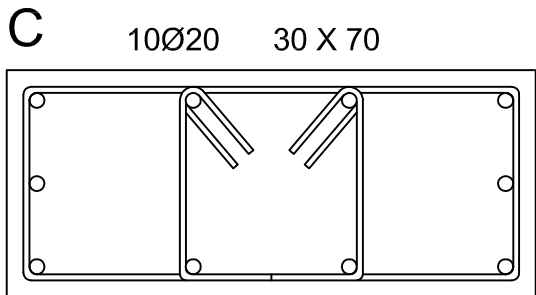
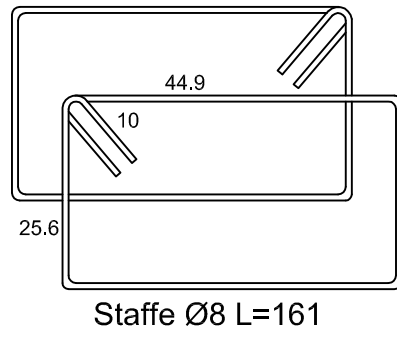
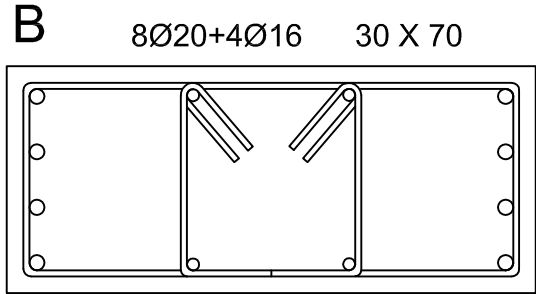
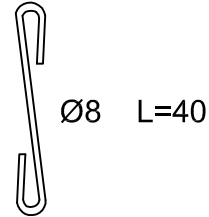
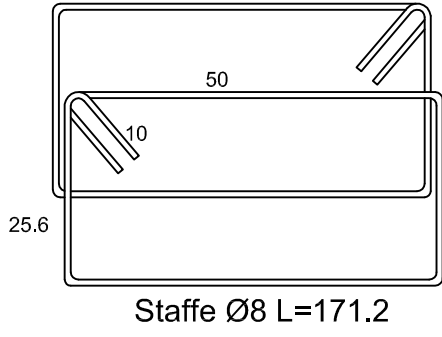
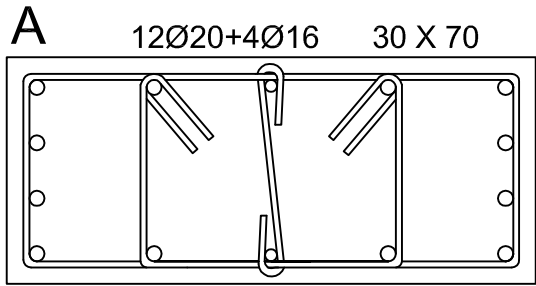
O49/000166

TABELLA RIEPILOGO PILASTRI

PILASTRO	SEZ.II-III-IV ord.	DA PARETI	II ordine	III ordine	IV ordine	SEZ.V-VI ord.	V ordine	VI ordine	Torrino scala
1	70 x 30	A	A	A	A	60 x 30	C1	C2	
2	70 x 30	B	B	B	B	60 x 30	B1	C2	
3	70 x 30	A	A	A	A	60 x 30	C1	C2	
4	30 x 70	C	C	C	C	30 x 60	C2	C2	
5	30 x 70	B	B	B	B	30 x 60	B1	C2	
6	70 x 30	B	B	B	B	60 x 30	B1	C2	
7	70 x 30	B	B	B	B	60 x 30	B1	C2	C2
8	30 x 70	C	C	C	C	30 x 60	C1	C2	C2
9	70 x 30	C	C	C	C	60 x 30	C1	C2	
10	30 x 70	B	B	B	B	30 x 60	B1	C2	
11	30 x 70	B	B	B	B	30 x 60	B1	C2	
12	30 x 70	C	C	C	C	30 x 60	C1	C2	
13	70 x 30	B	B	B	B	60 x 30	B1	C2	
14	30 x 70	C	C	C	C	30 x 60	C1	C2	C2
15	30 x 70	C	C	C	C	30 x 60	C1	C2	C2
16	70 x 30	B	B	B	B	60 x 30	B1	C2	
17	30 x 70	B	B	B	B	30 x 60	B1	C2	
18	30 x 70	C	C	C	C	30 x 60	C2	C2	
19	70 x 30	B	B	B	B	60 x 30	B1	C2	
20	70 x 30	B	B	B	B	60 x 30	B1	C2	
21	70 x 30	B	B	B	B	60 x 30	B1	C2	C2
22	30 x 70	C	C	C	C	30 x 60	C1	C2	C2
23	70 x 30	B	B	B	B	60 x 30	B1	C2	
24	30 x 70	B	B	B	B	30 x 60	B1	C2	
25	70 x 30	C	C	C	C	60 x 30	C2	C2	
26	70 x 30	B	B	B	B	60 x 30	B1	C2	
27	30 x 70	C	C	C	C	30 x 60	C2	C2	

SEZIONI TRASVERSALI TIPO

Scala 1:10



PILASTRO 2

SEZIONE LONGITUDINALE E DISTINTA DELLE ARMATURE

Scala 1:20

